

## Specifications

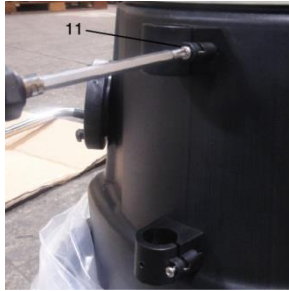
Rated voltage (V)	AC 110-120V or 220-240V / 50-60Hz
Vacuum motor power consumption(W/HP)	1200 / 1.6
Exhaust water pump power consumption(W/H)	800 / 1.1
Exhaust water pump flow (GPH/LPH)	3700 / 14000
Container capacity (Gal/L)	13.2 / 50
Suction hose length (ft/M)	26.2 / 8
Discharge hose length (ft/M)	32.8 / 10
Plastic pipe length(4pcs) (ft/M)	6.0 / 1.8
Cable length (ft/M)	32.8 / 10
Weight (lbs/kg)	70.5 / 32

## Safety instructions Power connection

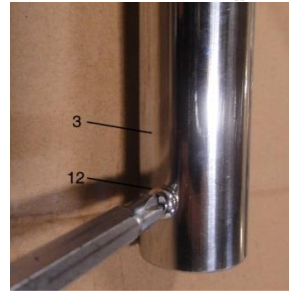
- Only suitable with a FI-switch 30mA and has to be connected to a regular safety plug socket.
- Never let the pump run dry.
- Only operate the device when no people are in the water!
- Before reaching into the water always unplug all devices located in the water.
- Only operate the device from an outlet that has been installed in accordance with directions.
- Compare supply voltage (V) and supply frequency (Hz) of your power source with the data on the nameplate. These data must agree.
- Ensure that the device is protected via a residual current protective circuit with a rated residual current of maximum 30mA. Please consult an electrician!
- For safety plug the vacuum into an electrical outlet with a (GFCI) Ground Fault Circuit Interrupter.
- Electrical installations for garden ponds must satisfy the international and national building determinations.
- Do not carry or pull the device by the connecting cable!
- Keep the power plug and all connection points dry!
- The device may not be operated if cable or casing is defective! Please consult your dealer or a specialized workshop.
- If you are not familiar with the instruction manual, you must not use the pump!
- This appliance is not suitable for use by persons (including children) with limited physical, sensory or mental capabilities or lacking experience and/or knowledge, except if they are supervised by a person responsible for their safety or have been instructed in the use of the appliance.
- Children should be supervised in order to make sure that they do not play with the appliance.

## Installation

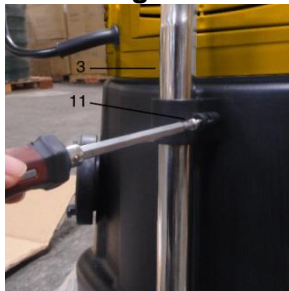
1. Use a Phillips head screw driver to unscrew the holder screw (part no.68)



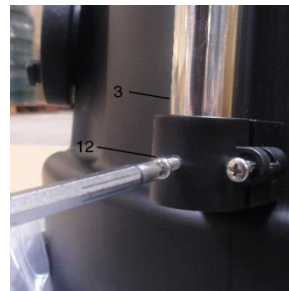
2. Use a Phillips head screw driver to unscrew the handle (part no.67)



3. Put the handle (part no.67) into the holder, and use a Phillips head screw driver to tighten the holder (part no.68)



4. Tighten the holder (part no.68)



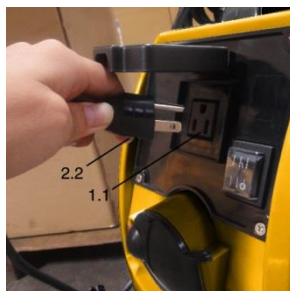
5. Install the suction hose (part no.131)



6. Install the discharge hose (part no.143)

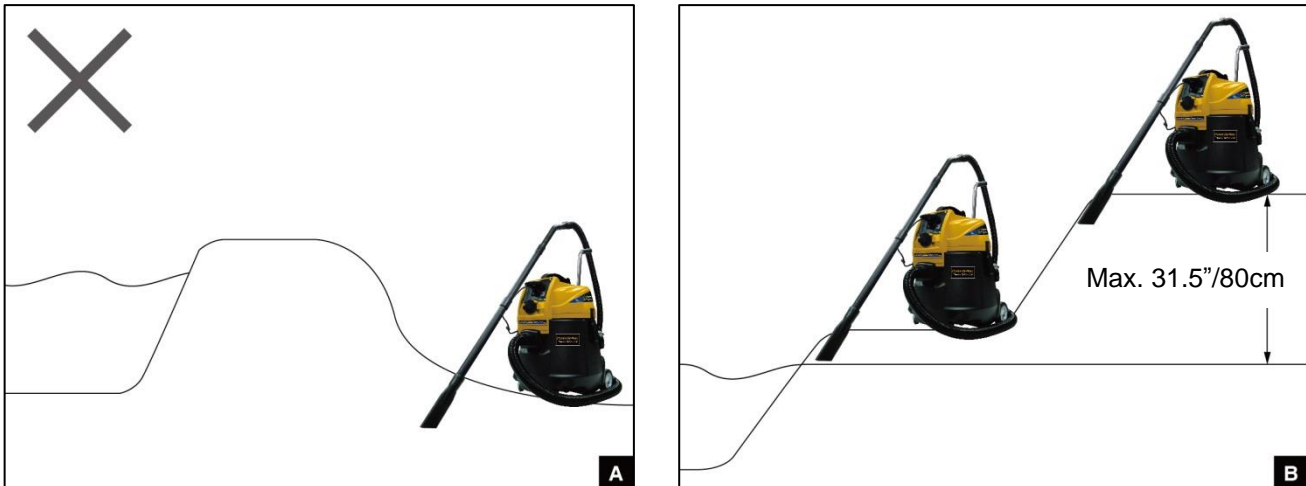


7. Connect the motor cable with socket (part no.61)

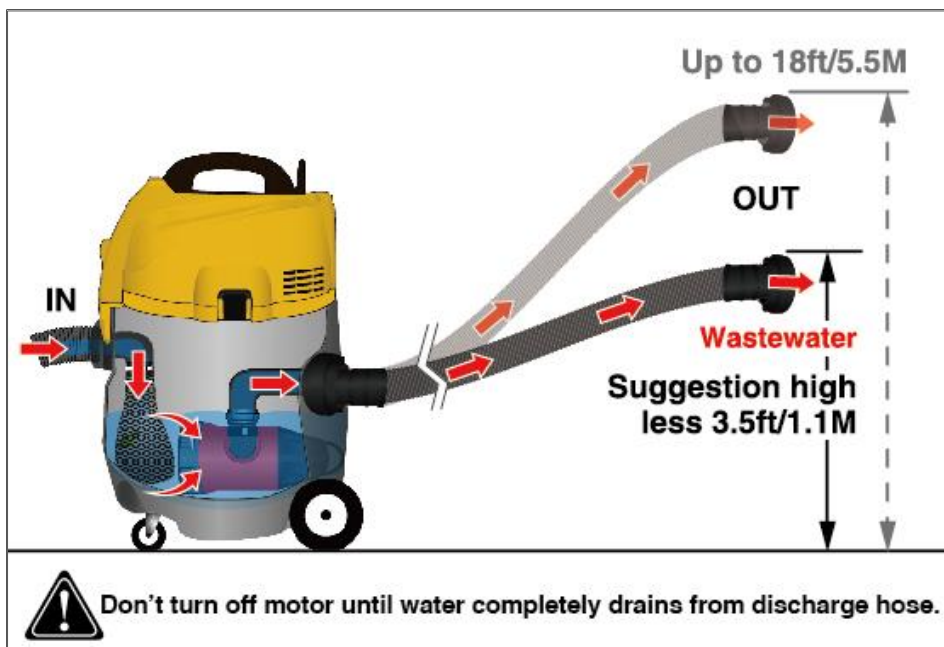


## Setup

1. Set up the vacuum near the pond. The minimum clearance to the edge of the pond is 2m (6.5ft) for safety reasons. The device should be set up as close to water level as possible. Make sure the device is standing firmly.
2. Lay the discharge hose in such a manner that the sludge water is conducted into shrubbery or grassy area during draining. Lay the discharge hose flat on the ground (if possible with a slight incline downward).
3. Fasten the optional sludge collection bag on the end of the discharge hose if needed (for example when suctioning hair algae), The sludge collection bag can be used as an optional attachment to collect only large debris like hair algae or leaves as the dirty water is draining out through the bag. Do not return any dirty water back to the pond. This is unhealthy for the fish. Only clear water without any offensive smell may be returned to the pond.
4. Connect the device to the main power.



The suction height is too large. Place the pond sludge suction cleaner in a lower position, but never lower than the water level (this creates the risk of self-priming and therefore of flooding, as well as leakage from the pond sludge suction cleaner). The pond sludge suction cleaner may be positioned no more than 80 cm higher than the waterlevel of the pond. (see fig. B)



## Operation and maintenance



The pond sludge suction cleaner consists of a round container, into which the suction tube and suction hose use vacuum to suck up the material which is to be removed. A pump fitted in the container continuously transports the sludge water via the outlet hose onto the ground or into a drain. Extraction is therefore generally possible without interruption.

The pond sludge suction cleaner must not be used as a vacuum cleaner for dry matter, only as a water extractor. Suction without the use of a sponge filter, and incorrect handling result in the nullification of the warranty claim.

In order to use the product correctly, please read the instructions below.

It must be ensured that the pond sludge suction cleaner is set up in such a way that it cannot fall into the water, and that it cannot tip. Wherever possible, position the pond sludge suction cleaner on a level surface at the height of the water surface, but no lower than the water level.

If an extension cable drum is connected in between, this must be fully rolled out because of the heat which would otherwise develop.

Operate the suction cleaner only in dry weather.

Attach the four type suction nozzle and brush (6 to 9) to the suction hose (5), the suction attachments (6-9) can be fitted on to the extension pipe as required (see picture A pos. 10)

Start up the pond suction cleaner with the switch (1.2) and hold the suction hose (5) together with the extension pipe (10) and the suction attachments (6 to 9) under the water, The dirty water can then be sucked out and continuously pumped off.

Pay attention to the end of the outlet hose. If no water is discharged after approx. 30 sec., then switch off the device for about 1 min., and restart the suction operation.

From time to time during the suction process, examine the end of the outlet hose, and confirm that the sludge water which is being extracted is also being pumped out.

When only smaller amounts of water are being pumped out, remove the plug (2.2) for the pump from the socket (1.1) on the suction head (1). In this way, you will prevent the pump from being damaged by dry running.

To empty the container (2), reinsert the plug (2.2) for the pump.

Safety information! When pumping out a flooded cellar, ensure that the water which has been pumped out cannot flow back in again.

### Problems during pumping

**Note!** To protect the pond sludge suction cleaner, a cut-off switch is installed; when triggered, this stops the suction power even though the turbine is running.

A fall-off in suction power can have the following causes;

- The filter bag is full of dirt. Open the zip at the side of the filter bag, and empty/clean the filter bag
- The pump has not been plugged in.
- The pump is blocked at the intake opening. Check the filter bag for damage. Disconnect the pond sludge suction cleaner from the mains, and clean the container (2) and the pump.
- The outlet hose is blocked (4). Examine and clean the hose end.
- The delivery head is too great for the pump; the outlet hose (4) is pointing upwards.
- The suction hose (5) is blocked, e.g. by a stone or weed.
- The sponge filter below the suction head (1) is blocked with dirt. Remove, and wash carefully.

## **Cleaning the suction cleaner**

Disconnect the pond sludge suction cleaner from the mains. Pull out the plug (2.2) for the pump from the socket on the suction head (1), open the clips on the container (2).

After this, lift the suction head (1) off the container (2), and wipe it with a dry cloth. The suction head (1) and the cable plug (1.3) must not become splashed or immersed in water. Now tip the dirt out of the container, and rinse this with water.

Also clean the sponge filter underneath the suction head (1).

If necessary, clean the dirt pump – submersible pump

- Follow the safety instructions! Remove the mains plug from the socket!
- You can remove the dirt pump for cleaning as described below.
- Use a flat tool to remove the (bayonet) connection from the container (2).
- Loosen the 2 nuts on the clip of the dirt pump and take the dirt pump out.
- You can unscrew the tubing on the dirt pump!
- Spray-wash dirt pump and attachments with a jet of water and remove all coarse dirt particles. Do not cause any damage!
- Check if the dirt pump starts up by briefly inserting the mains plug into the socket!

**Warning: Do not reach into the suction openings with your hands!**

- The user is not allowed to perform any other maintenance or cleaning steps (such as screwing open the dirt pump)! Contact your dealer or service workshop when you are experiencing problems!

During extended work breaks, disconnect the pond sludge suction cleaner from the mains (remove the plug from the socket). The pond sludge suction cleaner must be stored clean and dry.

If the pond sludge suction cleaner is not used during the winter months, empty it and store it indoors to prevent internal freezing.

Safety requirements for the pond sludge suction cleaner

**Attention!** Immediately on delivery, please examine the goods for transport damage and for completeness (see scope of delivery, fig. C). Make a complaint to the carrier immediately.

When using this appliance, all basic safety instructions must be complied with, especially the following: Attention! Handling water in combination with electrical devices requires absolute care and attention!

A frequent cause of accidents is lack of attention during routine procedures.

Ensure that your hands are dry when inserting or removing the mains plug.

\* The pond sludge suction cleaner must never be used as a vacuum cleaner for dry matter, only as a water extractor.

\* The pond sludge suction cleaner must never be operated unattended.

\* The pond sludge suction cleaner must never be operated without a sponge filter (below the suction head).

\* Repairs may be carried out only by an expert. Before use, all parts must be correctly assembled.

\* Under no circumstances whatsoever may materials such as explosive or poisonous liquids, glowing ash, or petrol be pumped (danger of explosion).

**Attention** – danger to life! Never immerse the suction head (1) into water or any other liquid!

Never hold the suction head (1) under flowing water, and always protect it from splashes!

For cleaning, remove the plug (1.3) from the mains, and wipe the suction head (1) with a damp cloth. Always clean the pond sludge suction cleaner at the end of work. Never clean the pond sludge suction cleaner before starting work!

When pumping, unwind the power cable (1.3) completely. Never pull the pond sludge suction cleaner by the power cable (1.3). Ensure that the power cable (1.3) is not trapped, squashed, or driven over.

This could damage the insulation. Connect the pond sludge suction cleaner only to a correctly installed voltage socket which has protective contacts and which is correctly equipped with a residual current circuit breaker. If an extension cable is required, ensure that the extension is suitable for the connected load of the pond sludge suction cleaner. Cable drums must be fully unwound (heat generation).

## **Remove the mains plug from the socket:**

- For cleaning the pond sludge suction cleaner
- For cleaning the dirt pump
- For emptying the container
- If the appliance has a fault
- When the appliance is no longer in use
- 

## **Note!**

The pond sludge suction cleaner is fitted with a cut-off switch.

The suction effect is interrupted when the liquid level in the container (2) rises too high, and therefore triggers the cut-off switch.

Remove the dirt or the foreign bodies from the intake opening of the dirt pump (disconnect from the mains first). See cleaning the dirt pump.

Never reach into the intake opening of the dirt pump when it is running (danger to life).

The pond sludge suction cleaner creates a very strong suction effect during operation! Never come into contact with

the suction opening!

Never direct the suction opening towards humans or animals!

If the appliance tips over while it is in operation, disconnect from the mains immediately! Set the appliance upright again, put the I/O switch (1.2) into the OFF position, and empty the container.

Before restarting work, it must be ensured that there is no liquid in the suction head.

Check the pond sludge suction cleaner regularly for damage.

The pond sludge suction cleaner must not be operated with a damaged power cable (1.3) or other damage (from dropping).

Never try to open the appliance yourself, or to replace the power cable (1.3).

Arrange for repairs to be carried out only by the manufacturer. Repairs carried out incorrectly can cause serious injuries to the user.

Before you pull the plug (1.3) out of the socket, use the I/O switch (1.2) to switch off the appliance.

\*Do not use the appliance when it is raining, or when a shower or storm is on the way.

The pond sludge suction cleaner must never be operated below the water level. (see fig. A+B) There is a danger from self-priming, and therefore a possibility of flooding of the suction cleaner and of the building. If the end of the suction hose (4) is higher than the location of the pond sludge suction cleaner, a hose block must be fitted between the suction cleaner and the hose connection, in order to prevent water from running back into the suction cleaner (danger of flooding).

No-one may remain in the water during the cleaning process. Bathing is forbidden!

### **Guarantee conditions**

For private use this device is warranted for 24 months, from the date of delivery. Proof of purchase is required.

Defects in material or workmanship will be repaired or replaced at our discretion and free of charge during the warranty period.

Damages resulting from faulty installation or operation, calcium deposits, inadequate care, frost, normal wear, or unauthorized repair attempts are not covered under the warranty.

Modifications to the device, such as separating the mains connection lines or the mains connector, invalidate the warranty. We assume no liability for consequential damages resulting from a failure of the device or proper operation.

In the event of a claim under this warranty, please return the device with the proof of purchase to us postage-paid through the authorized dealer from whom you purchased the device.

### **Waste disposal**

Waste disposal of electronic devices by the user in private households of the **EU**

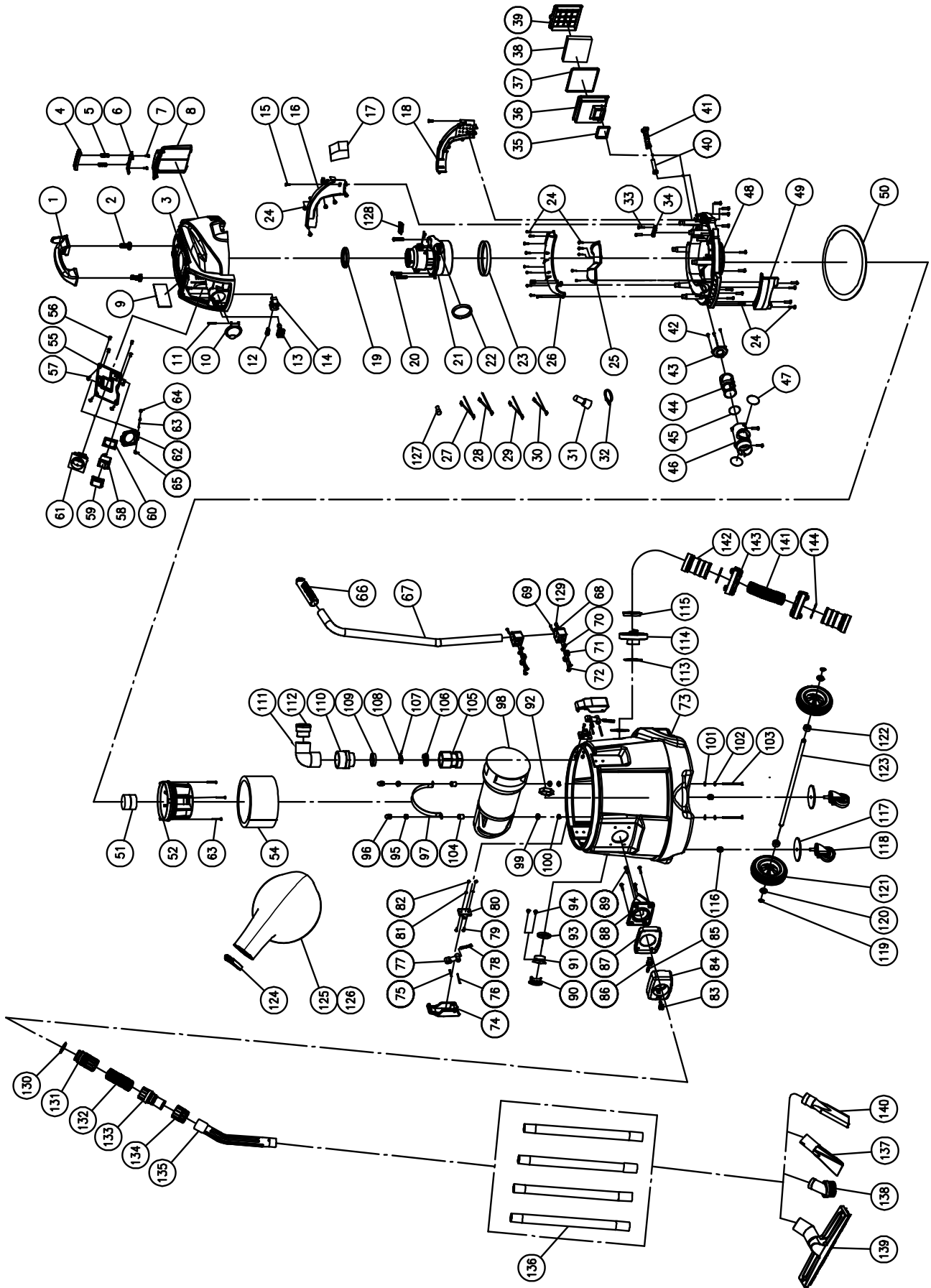
It is not allowed to dispose the product along with the regular waste disposal, instead it has to be collected separately.

It is your responsibility to dispose and recycle the device in a proper place and protect the environment through this.

More information, where to dispose your devices can be obtained at the local departments.

# Ordering replacement parts

When ordering, please state the appliance type, designation, and item from the following table:



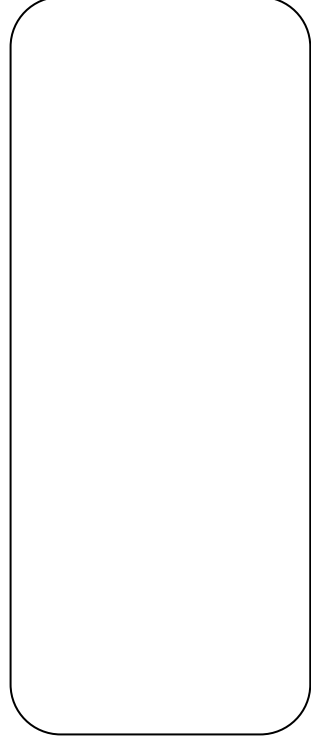
**Cyclone Power Non Stop Pond Vacuum**

No.	parts	Q'ty	No.	Parts	Q'ty	No.	Parts	Q'ty
1	Handle	1	53	Screw	3	105	Connector	1
2	Screw	2	54	Sponge	1	106	Ring	1
3	Top cover	1	55	Cover	1	107	Pin	1
4	Buttion	1	56	Nut	4	108	Cover	1
5	Spring	2	57	Screw	4	109	Seal	1
6	Locker	1	58	Power switch	1	110	Connector	1
7	Screw	2	59	Transparent cover	1	111	Bend connector	1
8	Rear cover	1	60	Transparent cover	1	112	Inner connector	1
9	Sponge 2	1	61	Scocket	1	113	Gasket	2
10	Cover	1	62	Cover	1	114	Base	1
11	Pin	1	63	Pin	1	115	Gasket	3
12	Spring	1	64	Spring-left	1	116	Nut	2
13	Button	1	65	Spring-right	1	117	Washer	2
14	Switch base	1	66	Holder	1	118	Front caster	2
15	Screw	2	67	Handle	1	119	C-ring	2
16	Tube (left)	1	68	Holder	2	120	Washer	2
17	Sponge 2	1	69	Screw	2	121	Rear wheel	2
18	Tube (right)	1	70	Washer	4	122	Bushing	2
19	Seal	1	71	Holder	4	123	Axle	1
20	Screw	3	72	Screw	4	124	Magic tie	1
21	Motor	1	73	Tank	1	125	Net bag	1
22	Gasket	1	74	Clip	2	126	Zipper	1
23	Gasket	1	75	Pin-short	2	127	Terminal	1
24	Screw	36	76	Pin-long	2	128	Thermostat	1
25	Cover 2	1	77	Clip holder	2	129	Screw	1
26	Cover 3	1	78	Spring	2	130	Seal	1
27	Wire	1	79	Screw	4	131	Hose connector	1
28	Wire	1	80	Clip base	2	132	Hose	1
29	Wire	1	81	Washer	4	133	Connector	1
30	Wire	1	82	Nut	4	134	Outer connector	1
31	Terminal	2	83	Button	1	135	Bead connector	1
32	Tie	5	84	Suction coupler	1	136	Extension pipe	4
33	Screw	2	85	Spring	1	137	Tarnsparent nozzle	1
34	Wire plate	1	86	Switch base	1	138	Round brush	1
35	Seal	1	87	Washer	1	139	Squeegee nozzle	1
36	Filter box	1	88	Suction coupler c	1	140	Crevice tool	1
37	Seal 2	1	89	Screw	4	141	Hose	1
38	Sponge 2	1	90	Upper clamp	1	142	Connector	2
39	Frame	1	91	Clamp base	1	143	Connector	2
40	Strain relief	1	92	Nut	1	144	C-ring	2
41	Power cord	1	93	Seal	1			
42	Screw	3	94	Screw	2			
43	Cover	1	95	Nut	2			
44	Controllor	1	96	Nut	2			
45	O-ring	1	97	Fixer	1			
46	Tube	1	98	Pump	1			
47	Seal	2	99	Washer	2			
48	Motor seat	1	100	Holder	2			
49	Cover	1	101	Washer	4			
50	Seal	1	102	C-ring	2			
51	Float	1	103	Screw	2			
52	Frame	1	104	Holder	2			



140827

**DISTRIBUTED BY**



**MATALA WATER TECHNOLOGY CO., LTD.**  
[www.matala.com.tw](http://www.matala.com.tw)